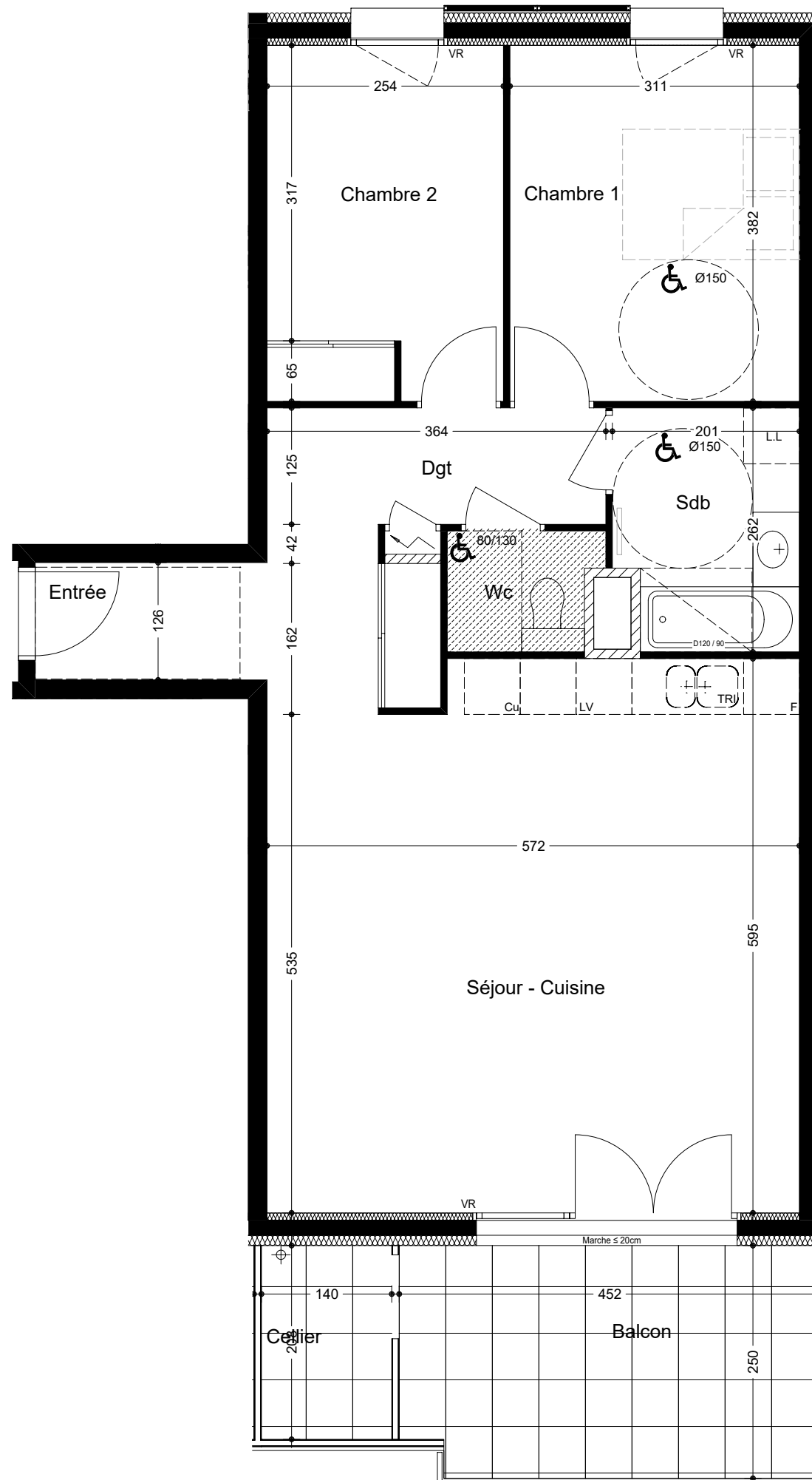
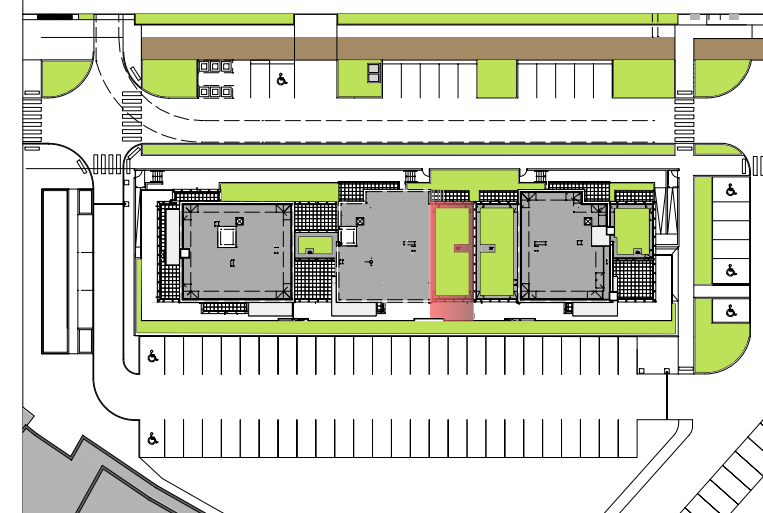




# GRAPHIK

N° appartement	Cage / Etage	Type
<b>B 202</b>	<b>B / N+2</b>	<b>T3</b>
Entrée		6.51 m <sup>2</sup>
Séjour - Cuisine		32.87 m <sup>2</sup>
Sdb		5.00 m <sup>2</sup>
Chambre 1		11.88 m <sup>2</sup>
Chambre 2		9.56 m <sup>2</sup>
Wc		2.01 m <sup>2</sup>
Dgt		4.55 m <sup>2</sup>
<b>SURFACE HABITABLE</b>		<b>72.52 m<sup>2</sup></b>
Balcon		11.10 m <sup>2</sup>
Cellier		2.91 m <sup>2</sup>


 Echelle :  2m