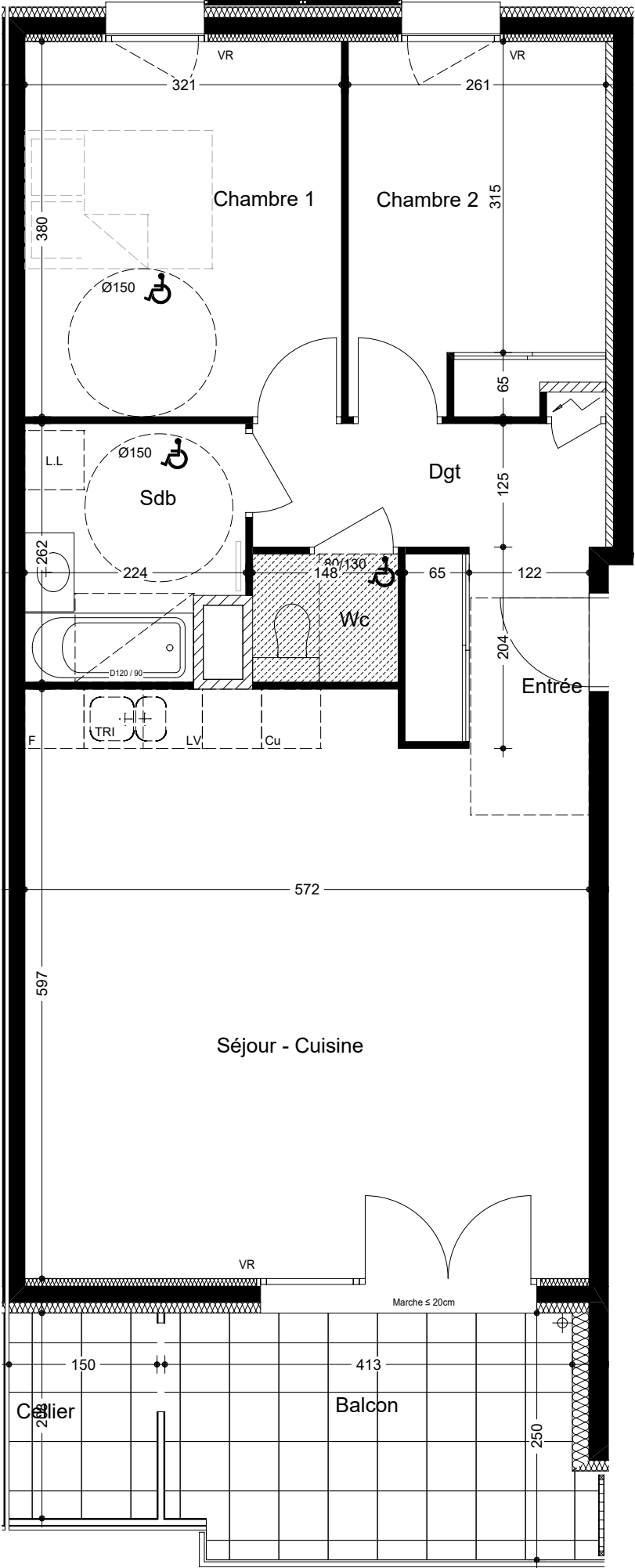




GRAPHIK

N° appartement	Cage / Etage	Type
B 304	B / N+3	T3
Entrée		3.58 m²
Séjour - Cuisine		32.99 m²
Sdb		5.40 m²
Chambre 1		12.20 m²
Chambre 2		9.53 m²
Wc		1.92 m²
Dgt		4.48 m²
SURFACE HABITABLE		70.25 m²
Balcon		10.39 m²
Cellier		3.20 m²



Echelle : 0 1 2m