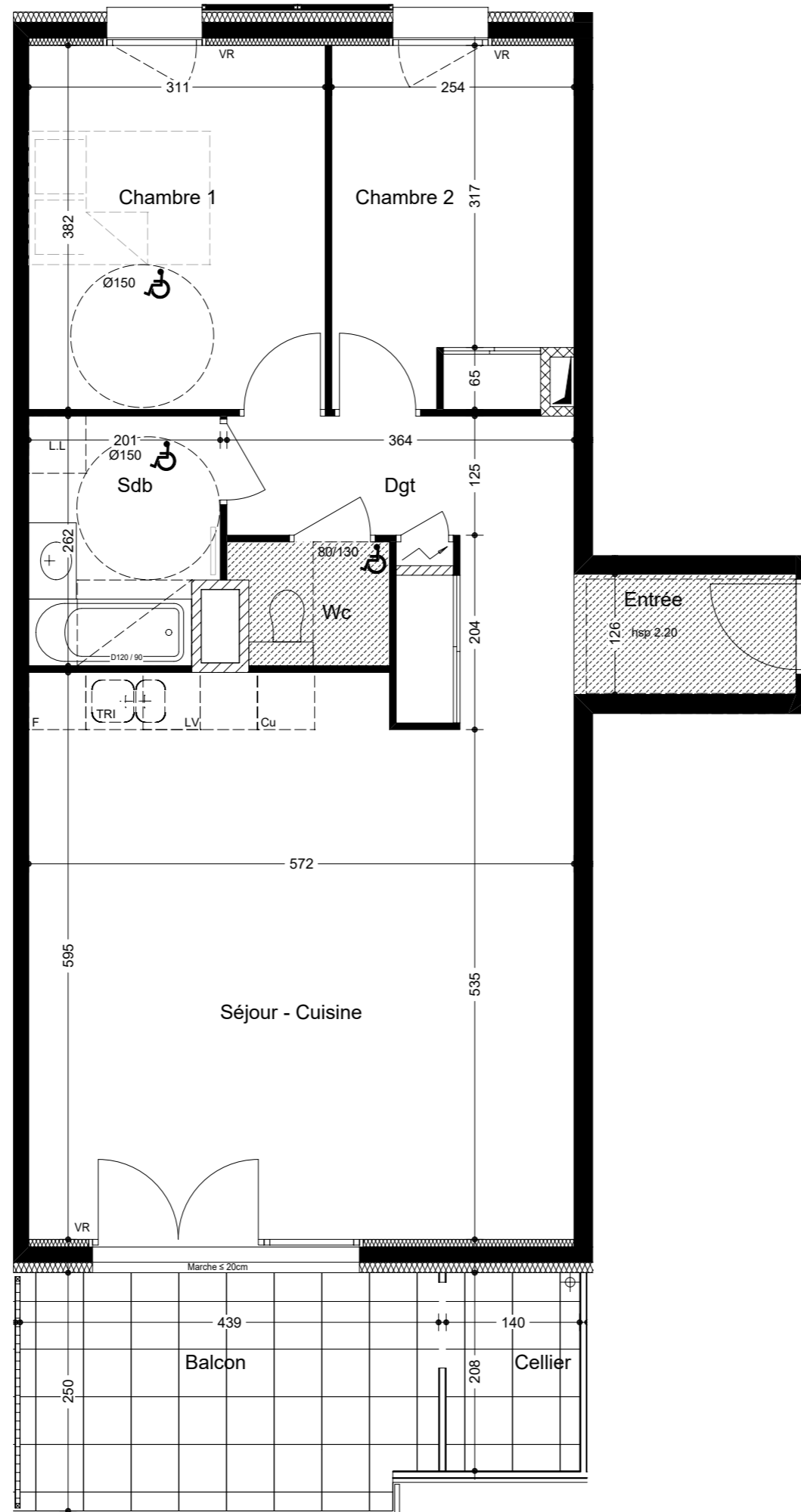




GRAPHIK

N° appartement	Cage / Etage	Type
C 303	B / N+3	T3
Entrée		6.30 m ²
Séjour - Cuisine		32.87 m ²
Sdb		5.00 m ²
Chambre 1		11.88 m ²
Chambre 2		9.36 m ²
Wc		2.01 m ²
Dgt		4.55 m ²
SURFACE HABITABLE		72.09 m²
Balcon		10.77 m ²
Cellier		2.91 m ²


 Echelle :  2m