

Localiser le terrain :



Jardin de la Combe



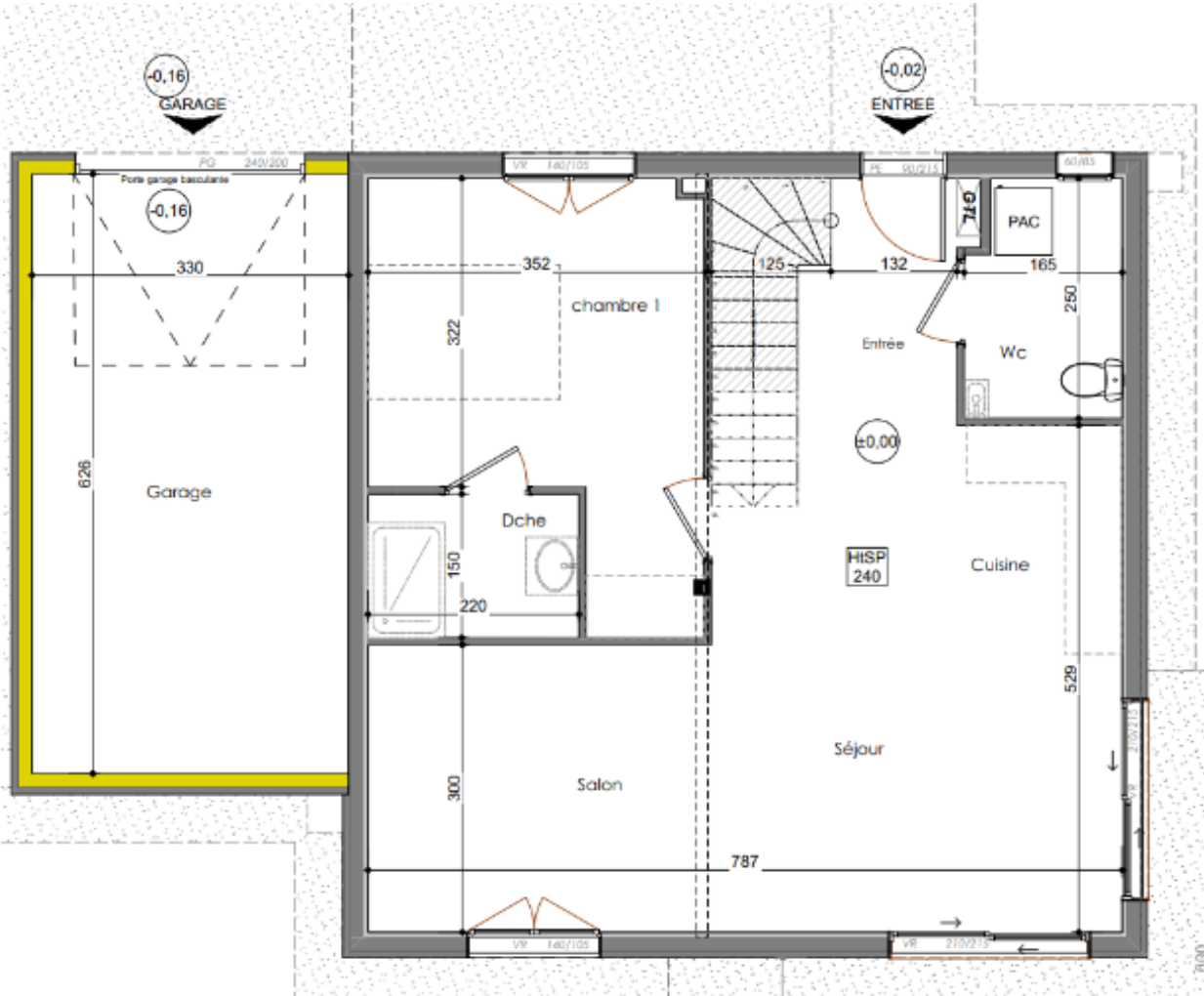
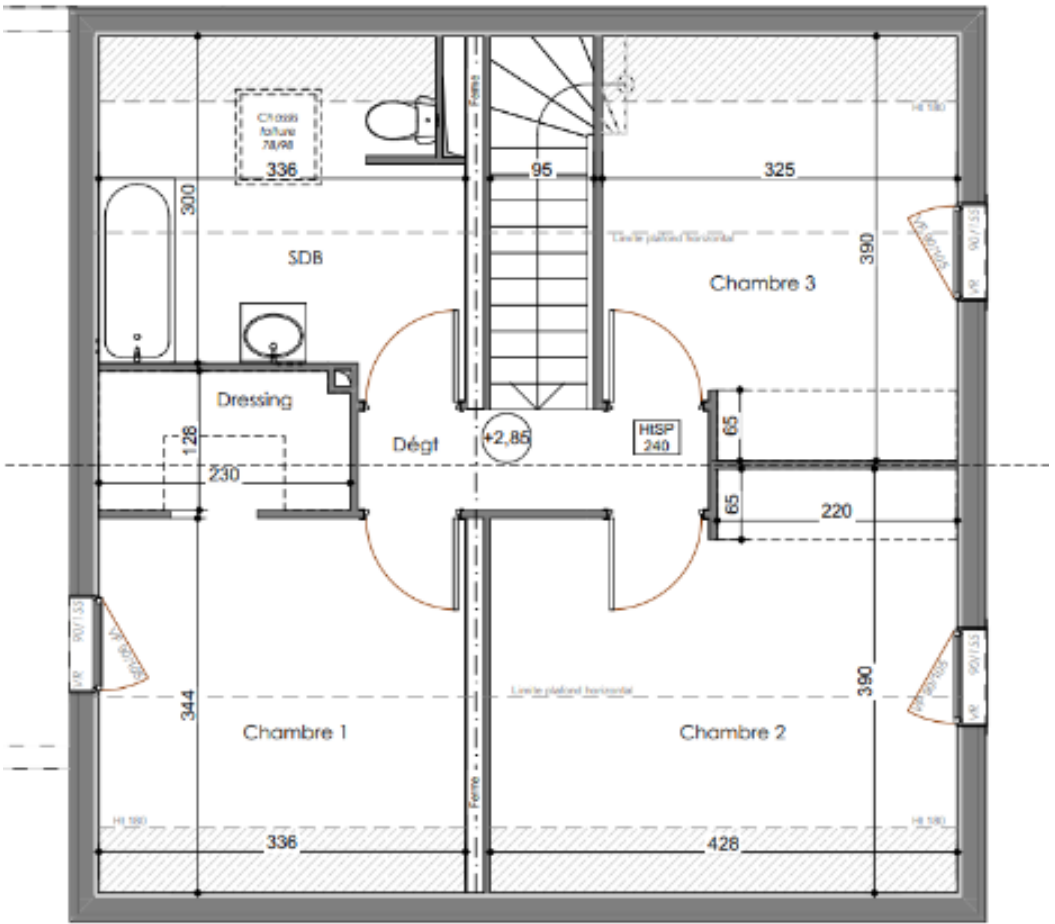
SILLINGY



**C&V**  
H A B I T A T

14 route de Rumilly - MEYTHET - 74 960 ANNECY

**04 50 24 60 90**



Surfaces Rez de Jardin		
	Utile	Habitable
Entrée, cuisine, séjour	40.06 m²	37.74 m²
Wc	3.91 m²	3.91 m²
Douche	3.30 m²	3.30 m²
Chambre 1	13.16 m²	13.16 m²
Total Rez de Jardin	60.43 m²	58.11 m²
Surfaces Etage		
	Utile	Habitable
Dégagement	2.97 m²	2.97 m²
Salle de bains	10.07 m²	8.26 m²
Chambre 1	11.57 m²	9.55 m²
Chambre 2	15.71 m²	13.14 m²
Chambre 3	12.11 m²	10.16 m²
Dressing	2.96 m²	2.96 m²
Total Etage	55.39 m²	47.04 m²
Total Habitable	105.15 m²	
Total Utile	115.82 m²	
Surface Garage	18 m²	
Surface Terrain	667 m² env.	
Détail Financier		
Terrain		265 000.00 €
Provision Frais d'Actes		non compris
Provision VRD*		35 000.00 €
Provision Taxes*		18 000.00 €
Construction CCMI**		246 900.00 €
Total		564 900.00 €

