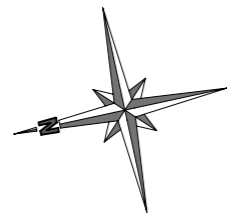
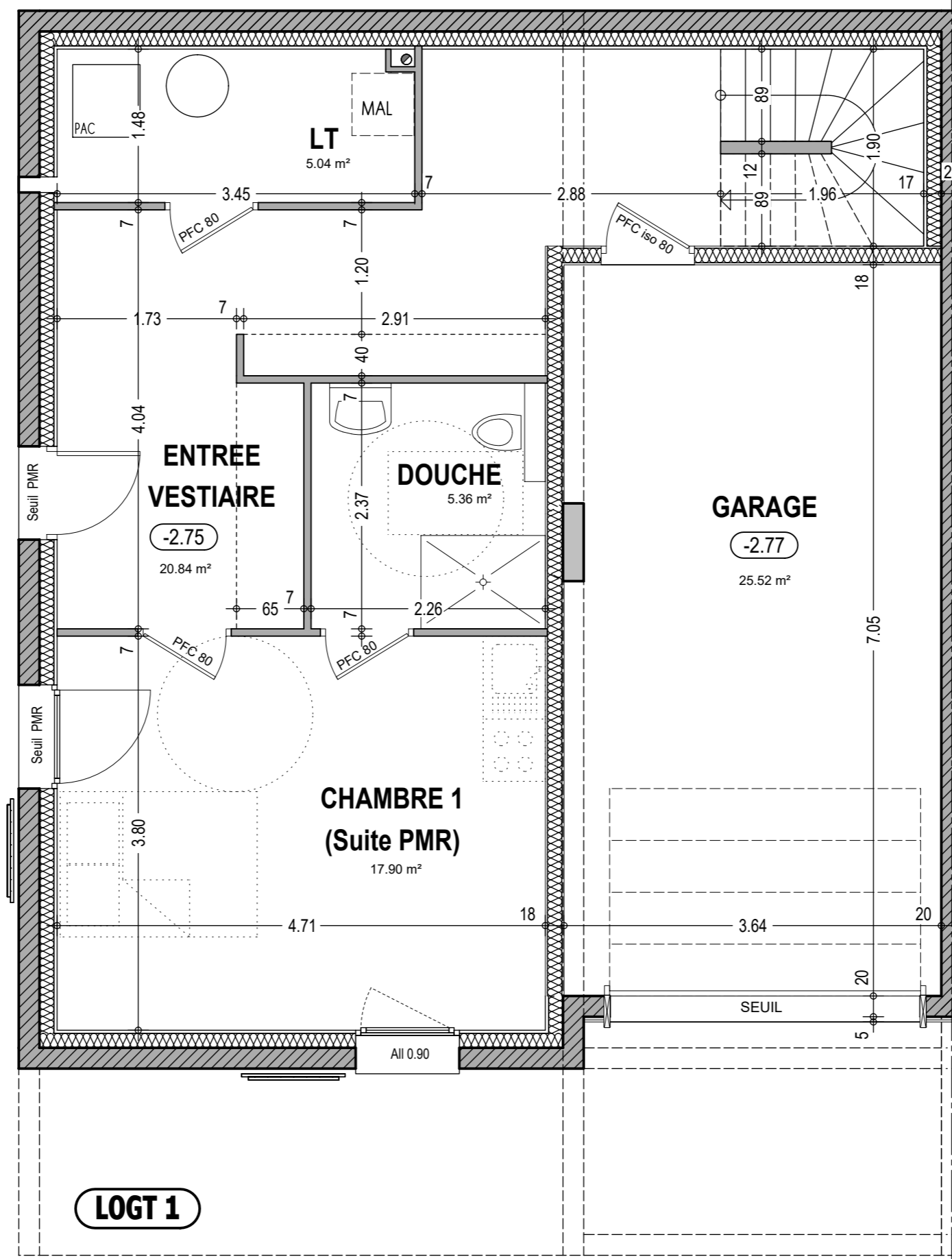


MASSE

Entrée



NIVEAU ENTREE-GARAGE



LOGT 1

-LE CHALET DE LA CREMAILLERE- SAINT GERVAIS LES BAINS

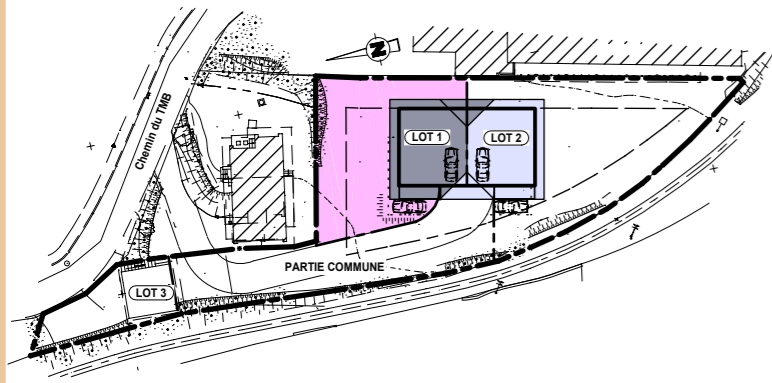
CHALET Lot 1

SURFACE LOT 1= 360m2 (environ)

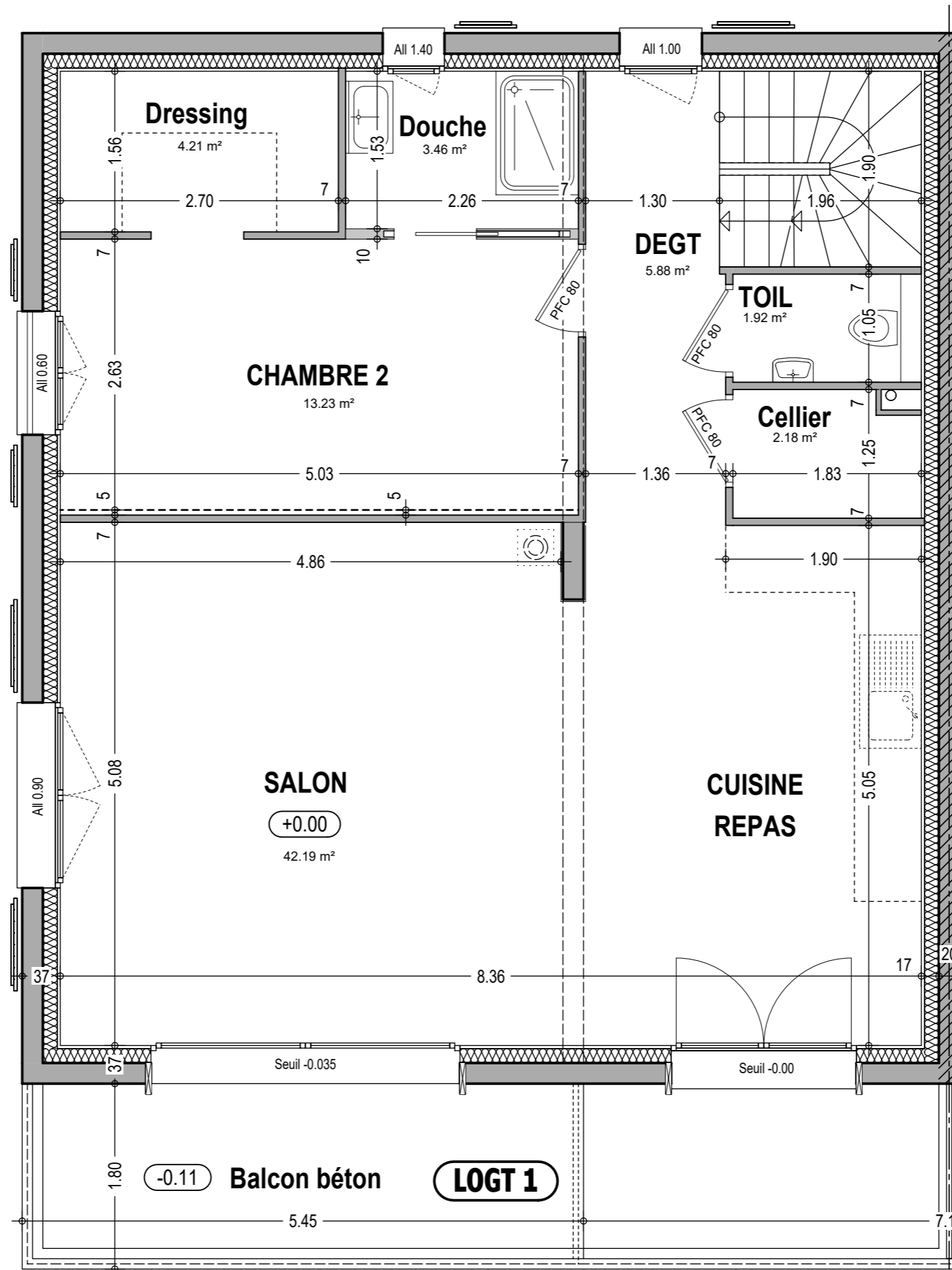
*

TABLEAU DE SURFACES LOT 1		
	HABITABLE	UTILE
ANNEXE		
GARAGE		25,52
TOTAL ANNEXE		25,52
ENTREE		
ENTREE	19,41	20,84
CHAMBRE 1	17,90	17,90
DOUCHE	5,36	5,36
LT BUANDERIE	5,04	5,04
TOTAL REZ	47,71	49,14
REZ		
DEGT	5,88	5,88
SALON REPAS	42,19	42,19
CHAMBRE 2	13,23	13,23
DRESSING	4,21	4,21
DOUCHE	3,46	3,46
CELLIER	2,18	2,18
TOIL	1,92	1,92
TOTAL ETAGE	73,07	73,07
ETAGE		
DEGT	6,34	6,34
CHAMBRE 3	11,01	11,01
CHAMBRE 4	8,92	15,20
CHAMBRE 5	8,07	13,37
BAIN	4,37	4,37
TOIL	1,91	1,91
TOTAL COMBLES	40,62	52,20
TOTAL HABITABLE	161,40	
TOTAL UTILE		174,41

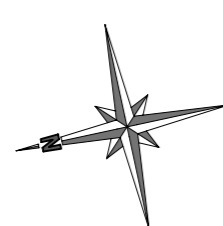
En date du 29/01/2025



MASSE



NIVEAU REZ DE JARDIN



-LE CHALET DE LA CREMAILLERE- SAINT GERVAIS LES BAINS

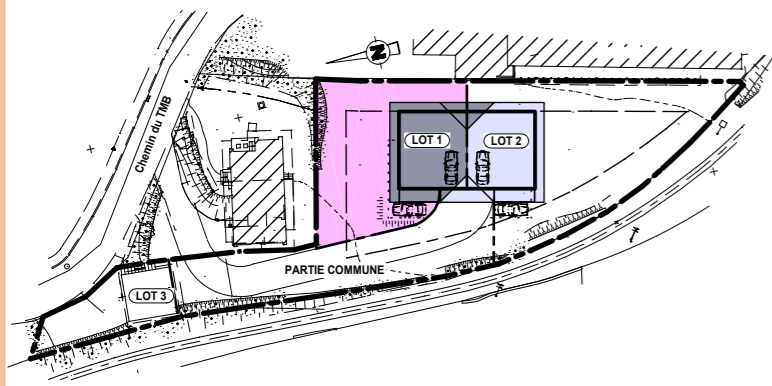
CHALET Lot 1

SURFACE LOT 1= 360m2 (environ)

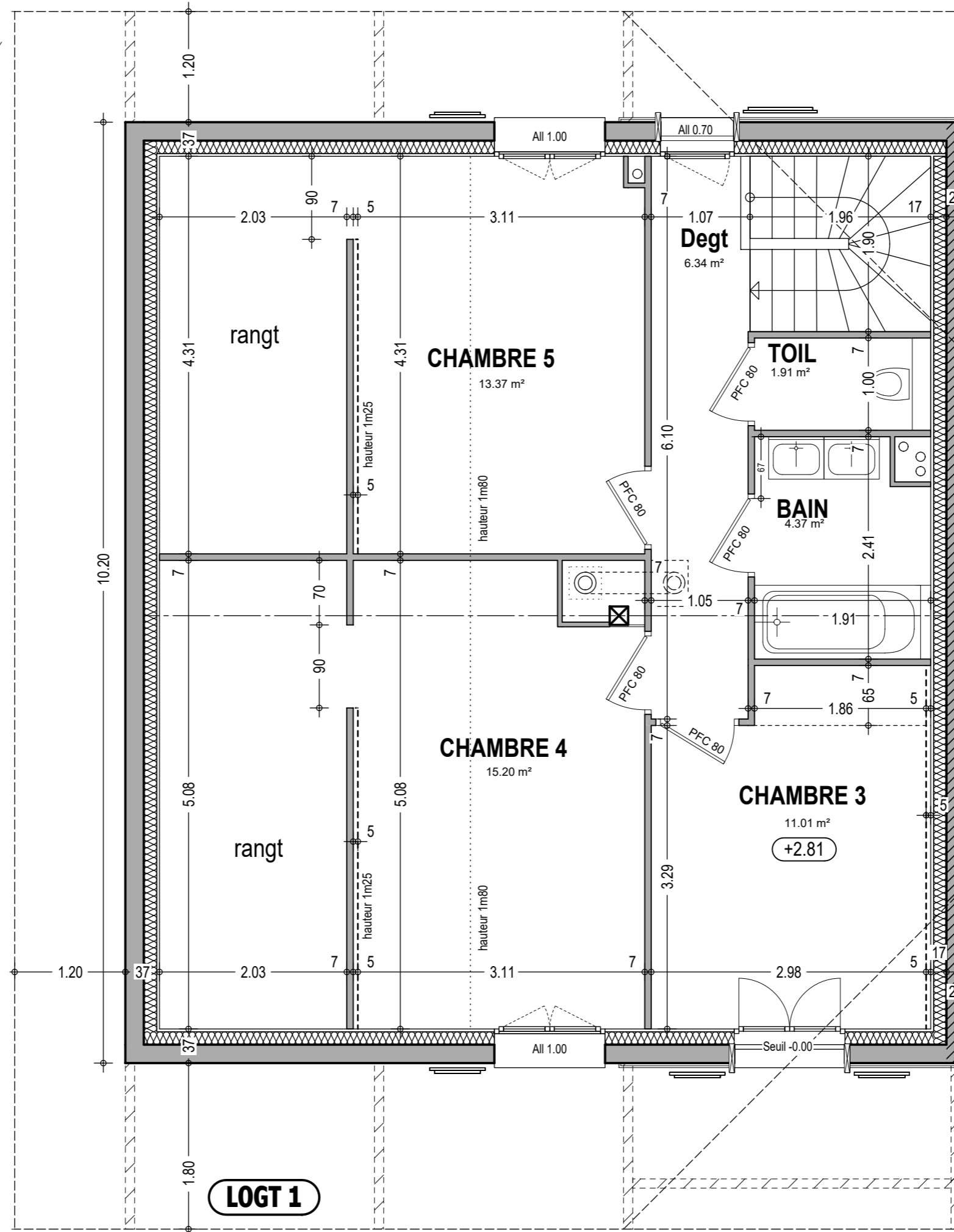
*

TABLEAU DE SURFACES LOT 1		
	HABITABLE	UTILE
ANNEXE		
GARAGE		25,52
TOTAL ANNEXE		25,52
ENTREE		
ENTREE	19,41	20,84
CHAMBRE 1	17,90	17,90
DOUCHE	5,36	5,36
LT BUANDERIE	5,04	5,04
TOTAL REZ	47,71	49,14
REZ		
DEGT	5,88	5,88
SALON REPAS	42,19	42,19
CHAMBRE 2	13,23	13,23
DRESSING	4,21	4,21
DOUCHE	3,46	3,46
CELLIER	2,18	2,18
TOIL	1,92	1,92
TOTAL ETAGE	73,07	73,07
ETAGE		
DEGT	6,34	6,34
CHAMBRE 3	11,01	11,01
CHAMBRE 4	8,92	15,20
CHAMBRE 5	8,07	13,37
BAIN	4,37	4,37
TOIL	1,91	1,91
TOTAL COMBLES	40,62	52,20
TOTAL HABITABLE	161,40	
TOTAL UTILE		174,41

En date du 29/01/2025



MASSE



NIVEAU ETAGE

-LE CHALET DE LA CREMAILLIERE- SAINT GERVAIS LES BAINS

CHALET Lot 1

SURFACE LOT 1= 360m2 (environ)

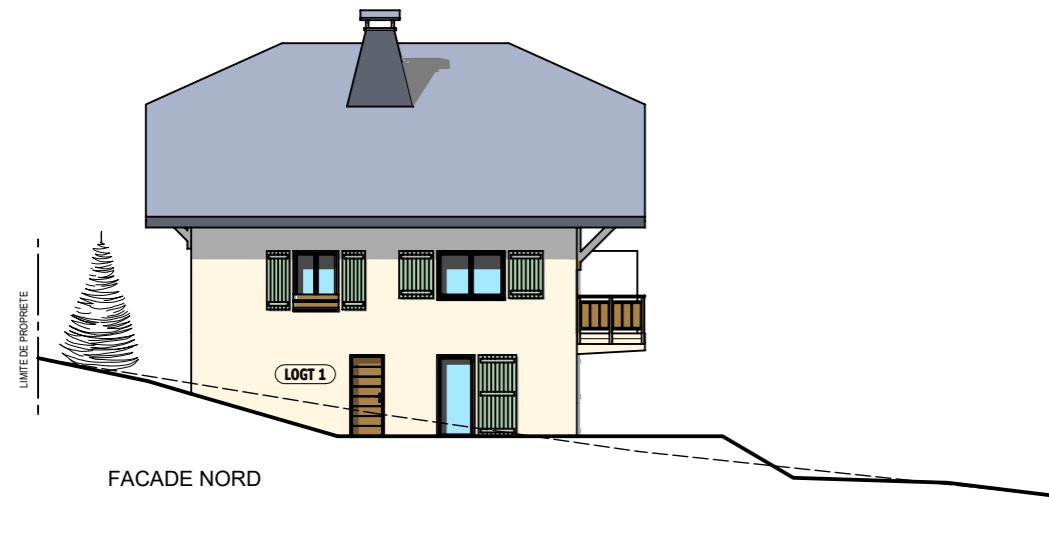
TABLEAU DE SURFACES LOT 1		
	HABITABLE	UTILE
ANNEXE		
GARAGE		25,52
TOTAL ANNEXE		25,52
ENTREE		
ENTREE	19,41	20,84
CHAMBRE 1	17,90	17,90
DOUCHE	5,36	5,36
LT BUANDERIE	5,04	5,04
TOTAL REZ	47,71	49,14
REZ		
DEGT	5,88	5,88
SALON REPAS	42,19	42,19
CHAMBRE 2	13,23	13,23
DRESSING	4,21	4,21
DOUCHE	3,46	3,46
CELLIER	2,18	2,18
TOIL	1,92	1,92
TOTAL ETAGE	73,07	73,07
ETAGE		
DEGT	6,34	6,34
CHAMBRE 3	11,01	11,01
CHAMBRE 4	8,92	15,20
CHAMBRE 5	8,07	13,37
BAIN	4,37	4,37
TOIL	1,91	1,91
TOTAL COMBLES	40,62	52,20
TOTAL HABITABLE	161,40	
TOTAL UTILE		174,41

En date du 29/01/2025

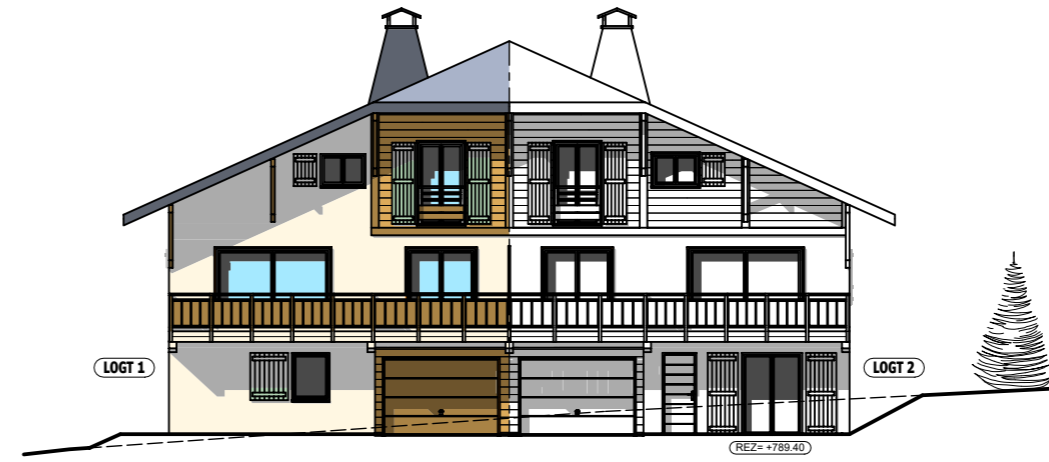
**-LE CHALET
DE LA CREMAILLERE-
SAINT GERVAIS LES BAINS**

CHALET Lot 1

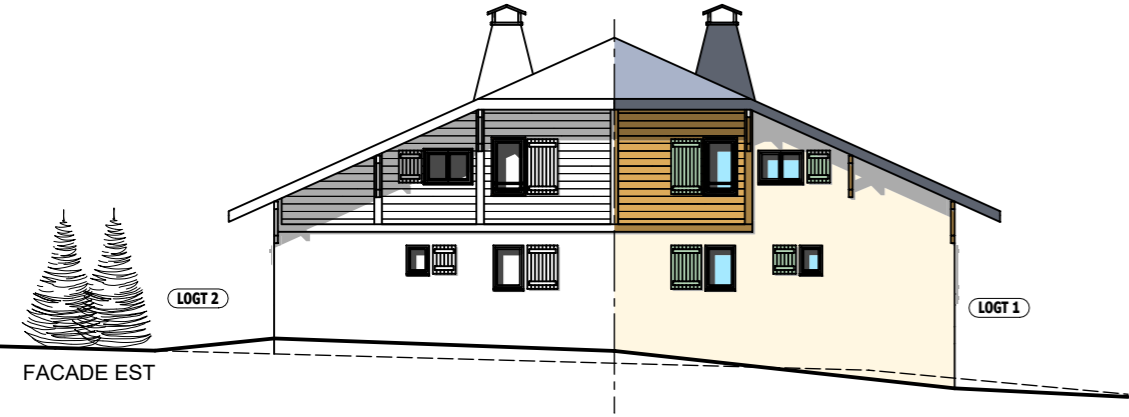
SURFACE LOT 1= 360m2 (environ)



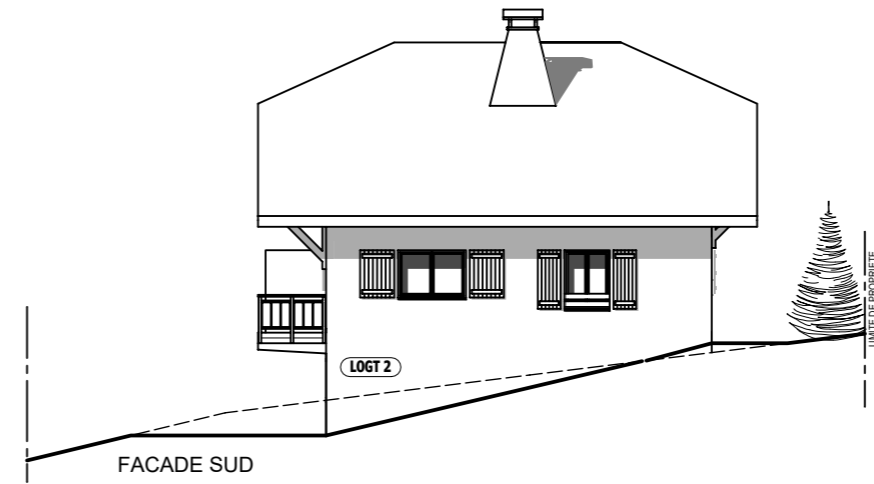
FACADE NORD



FACADE OUEST

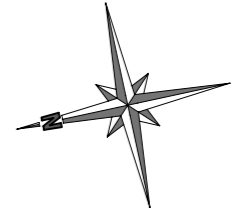


FACADE EST

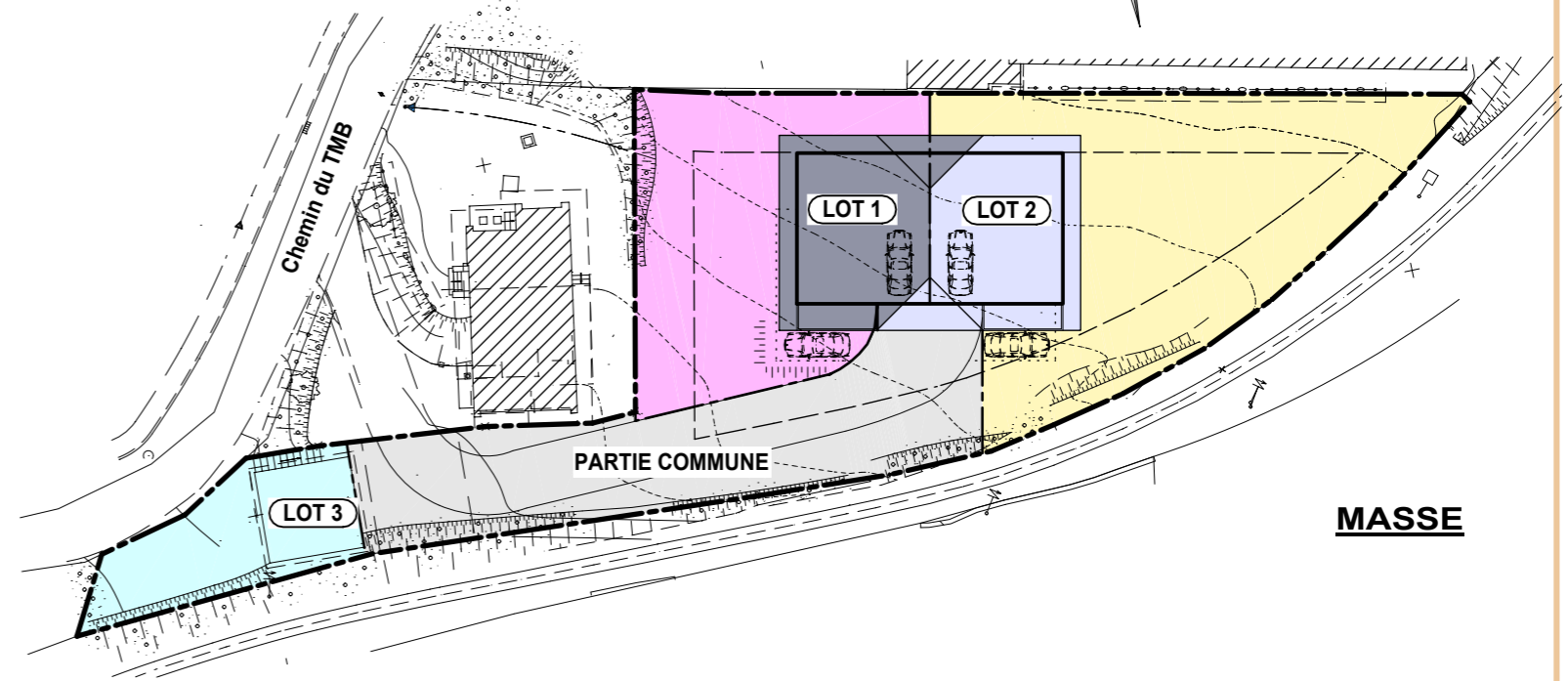


FACADE SUD

*



PERSPECTIVE (non contractuelle)



En date du 29/01/2025