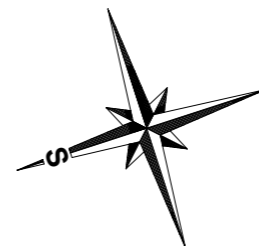
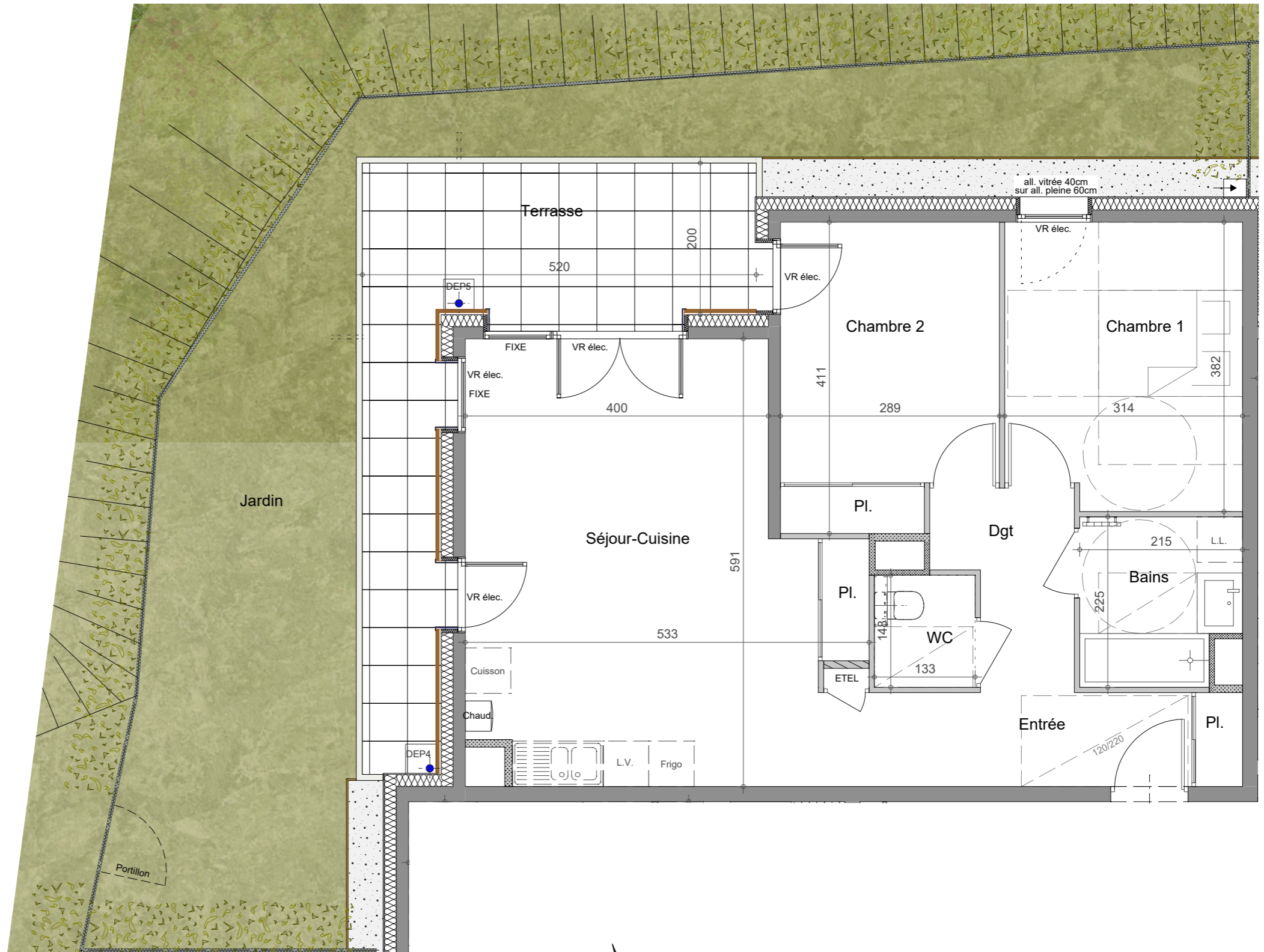
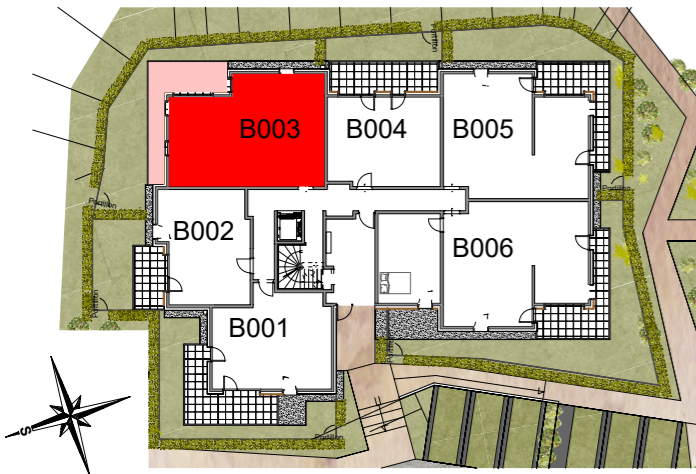




Type	Logement	Niveau	Bâtiment
<b>T3</b>	<b>B003</b>	<b>RDC</b>	<b>B</b>
Entrée			4.29 m <sup>2</sup>
Séjour-Cuisine			29.15 m <sup>2</sup>
Chambre 1			11.62 m <sup>2</sup>
Chambre 2			11.21 m <sup>2</sup>
Bains			4.53 m <sup>2</sup>
WC			1.97 m <sup>2</sup>
Dgt			4.07 m <sup>2</sup>
<b>SURFACE HABITABLE TOTALE</b>			<b>66.84 m<sup>2</sup></b>
Terrasse			16.71 m <sup>2</sup>
Jardin			45.81 m <sup>2</sup>

SURFACES COMPRIS PLACARDS EVENTUELS



Echelle : 0 0.5 1 m 2 m